

# station information

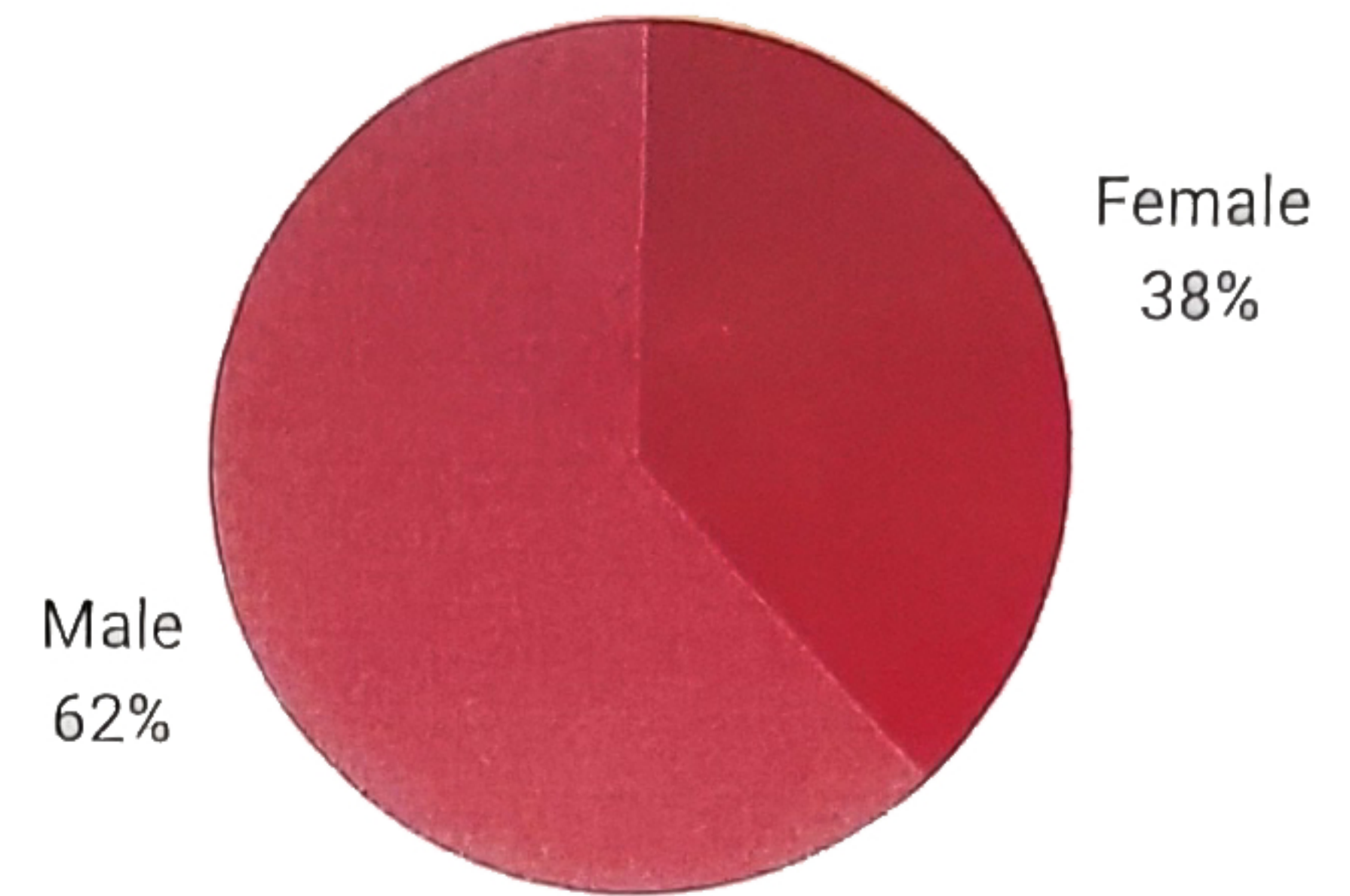
## KCBQ STATION HISTORY:

The first air date was in 1946 (KSDJ). The station became KCBQ (Columbia Broadcast Quality) playing top 40's during 1950's - 70's, then changed to country / western & adult contemporary 1980's - 90's followed by Salem and Conservative News/Talk in 1996 and "The Answer" format in 2015-New FM tower added 2018 above Cal State San Marcos to deliver to No. County.

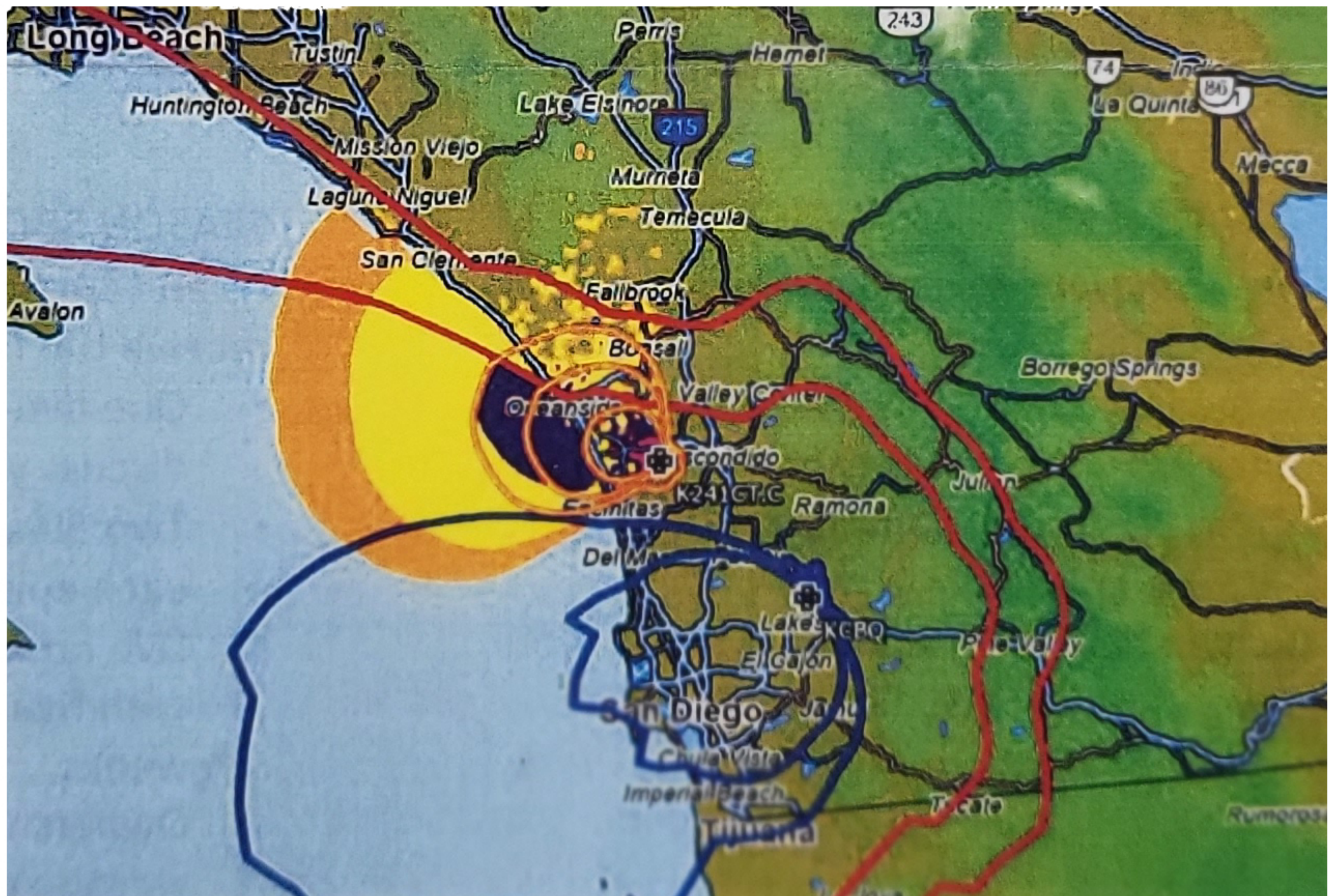
## KCBQ

Adults 35+	95%
College Educated	65%
HHI \$100,000+	54%
Owns Home	76%

## AUDIENCE BALANCE



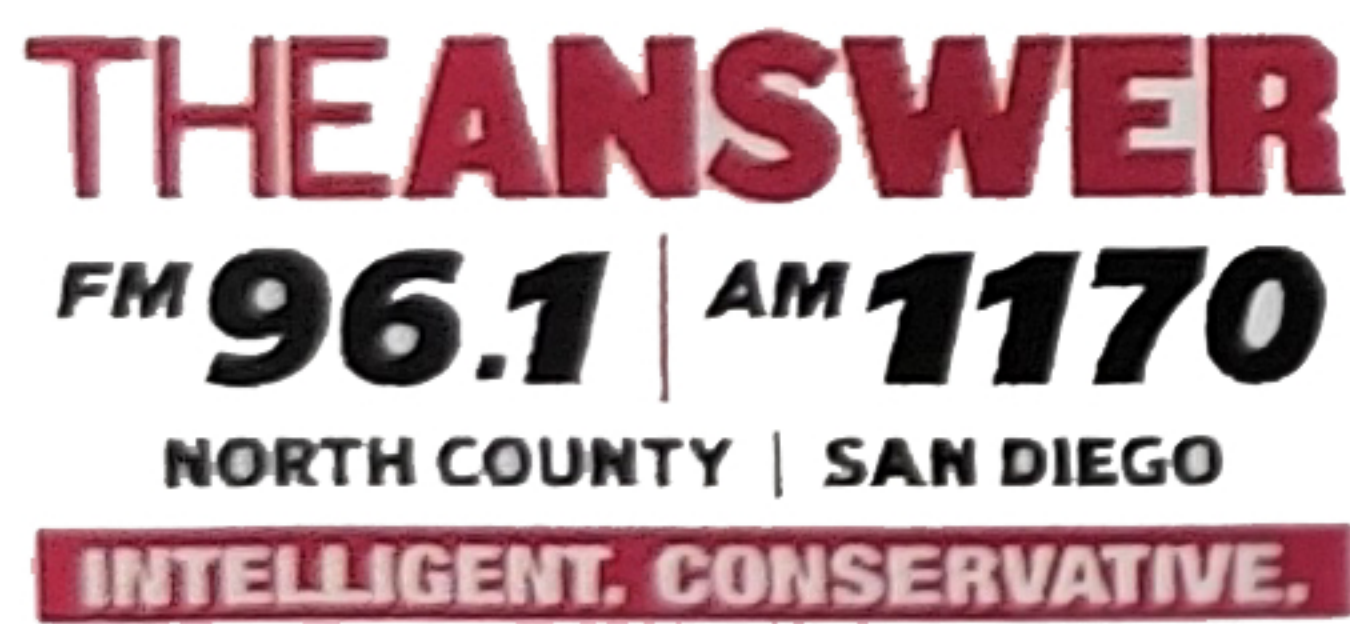
## Coverage Map



Streaming By The \*\*\*Numbers:

\*CUME LISTENERS: 34,278

\*ACTIVE LISTENERS: 123,205



## CONTACT MARK

EMAIL: [info@markthepark.org](mailto:info@markthepark.org)

WEB: [www.markthepark.org](http://www.markthepark.org)

PHONE: 619-618-8885

Saturday 10:30 am to 11:00 am

A show about small business